

Power loom operator
TSC/Q 2208
Theory

1. TSC/N 2215 Taking charge of shift and handing over shift to Power-loom operator

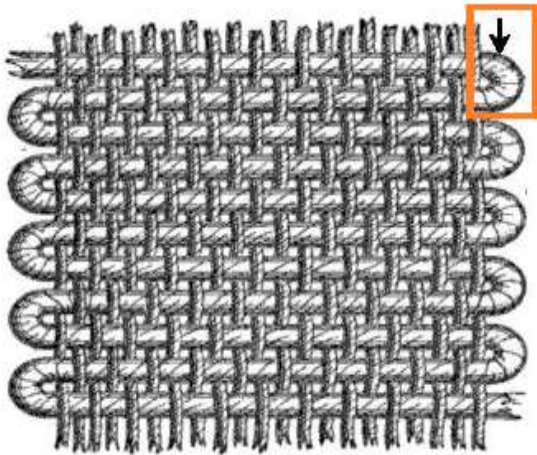
1. At what time should you arrive at the workplace to take over your shift? (L)

- A. 15 minutes after your shift begins
- B. Two hours before your shift begins
- C. 10-15 minutes before your shift begins
- D. Only when the previous shift operator asks you to come

2. Which of the following documentation used by the employee to communicate information about power loom weaving machine working condition to another employee in the next shift? (M)

- A. Health record
- B. Assignment record
- C. Shift report
- D. Incident report

3. It is a yarn/thread that runs back and forth. What is called? (L)



- A. Wrap
- B. Weft
- C. Knot
- D. Pile

4. Small pin holes appearing near the selvage zones and being more prominent in fine and superfine varieties. What is this fabric defect? (L)

- A. Temple marks
- B. Smash
- C. Tear In
- D. Weft Bars

5. Information about changes or repairs made in the previous shift should be obtained from _____ (M)

- A. Visitors
- B. The previous shift operator
- C. The housekeeping staff
- D. Your supervisor

2. TSC/N 2216 Running the power loom

6. It is the housing for the shuttle and is made of wood. It has a spindle and a picker. (L)

- E. Sley of Lay
- F. ShuttleBox
- G. Reed
- H. Picker

7. Also known as loom or warp waste, this refer to the length of warp threads in the front and back that are not woven. (L)



- A. Thrums
- B. Hairy Fabric
- C. Tails Out
- D. Warp Yarn

8. can result from: excessive shuttle tension, weak yarn, or filling coming in contact with a sharp surface. (L)

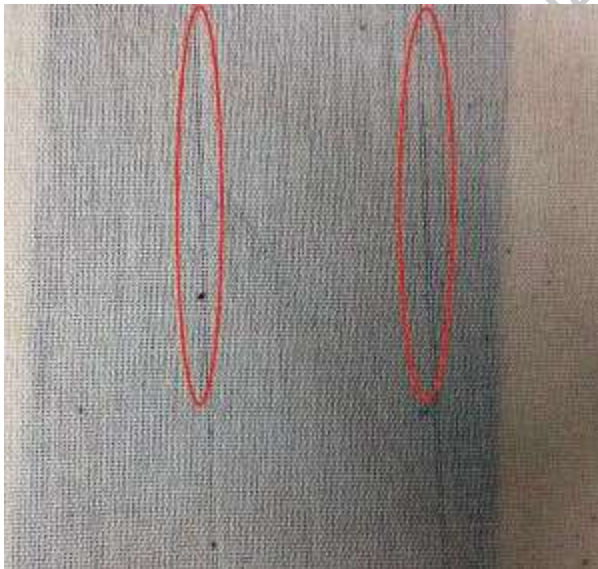


- A. Bend Pick
- B. Short Pick
- C. Broken picks
- D. Loose pick

9. The strain on the warp yarns during shedding does not depend on (L)

- A. Shed height
- B. Loom speed
- C. Shed symmetry parameter
- D. Distance between back rest and cloth fell

10. Misdraws lead to incorrect positions of ends in the fabric causing considerable damage in fabrics with woven design or stripes. This can be corrected by : (M)



- A. Resort to early shed timing
- B. Bring the defect to the notice of the drawing operator
- C. Instruct the weaver to attend to warp breaks immediately
- D. Inspect the drop pins while putting on a new beam and weed out the defective ones

3. TSC/N 9001 Maintain work area, tools and machines

11. If a part of a machine is defective, you should _____(M)
- A. Ignore it if the result is proper
 - B. Immediately report it to the supervisor
 - C. Try to repair it immediately
 - D. Stop all work and return home
12. Which among the following helps in reducing fatigue among workers?
- A. A proper posture and position during work
 - B. Improper posture and position during work
 - C. Repairing expensive vehicles
 - D. Repairing inexpensive vehicles
13. Why should regular inspections of the workplace take place (M)
- A. To check whether the working environment is safe
 - B. To prepare for a visit from a HSE inspector
 - C. To check that all staff are present and correct
 - D. To check everyone is doing their job
14. Who has responsibility for health and safety at your place of work (M)
- A. Everyone at your place of work no matter who employs them
 - B. The client and main contractor only
 - C. Self employed contractors only and employees
 - D. Employers, employees and sub contractors
15. Accidents are best prevented by (M)
- A. The Managing Director
 - B. The Health and Safety Executive
 - C. Employers inspecting workplaces
 - D. People being aware of hazards and working in a safe manner

4. TSC/N 9002 Working in a team

16. Which type of behavior is considered as positive and appreciated? (H)
- A. Aggressive
 - B. Polite
 - C. Ignorant
 - D. Arrogant

17. In a proactive manner, you have to receive _____ from reporting manager(H)

- A. Salary Slips
- B. Appointment Order
- C. Bill
- D. Work flow chart

18. You have to communicate with _____ about the process flow improvement and target or performance related targets. (H)

- A. MD
- B. Sub ordinates
- C. Reporting supervisor
- D. Other department manager

19. How should you communicate with your juniors at the workplace? (H)

- A. You should intimidate them
- B. Rudely
- C. By being friendly and helpful
- D. You should ignore them

20. Interpersonal conflicts should be _____ (M)

- A. Resolved at the workplace
- B. Resolved outside the workplace
- C. Ignored
- D. Shared with the supervisor

5. TSC/N 9003 Maintain health, safety and security at workplace

21. While working in noisy area it is necessary to use _____ to prevent from heavy noise. (L)

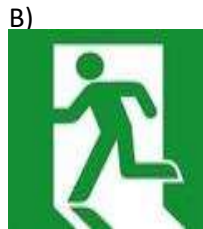
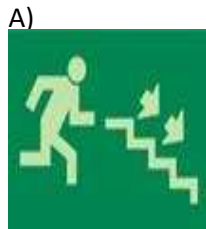
- A. Ear plug
- B. Nose mask
- C. Ear phone
- D. Glasses

22. What are the two main functions of an RPE (Respiratory Protective Equipment)? (M)

- A. Air purifying and air supplying
- B. Water purifying and water supplying
- C. Air purifying and water purifying
- D. Air supplying and water supplying

23. In case of an emergency evacuation, which of the following sign represents a safe area to assemble? (M)

- A. A
- B. B
- C. **C**
- D. D



24. Which type of fire extinguisher should be used if there is fire on an electrical apparatus? (M)

- A. Water and Foam extinguishers
- B. Wet Chemical extinguishers
- C. **Dry Chemical fire extinguishers**
- D. Water Mist extinguishers

25. In case of any accident _____ is top priority to save the life of the victim (M)

- A. Evacuation
- B. **First aid**
- C. Raising alarm
- D. Taking him to hospital

6. TSC/N 9004 Comply with industry and organizational requirement

26. If there is damage in the fabric due to your mistake, you should _____ (M)

- A. Try to put the blame on others
- B. Blame the machine
- C. **Take responsibility and learn preventive measures**
- D. Take responsibility and quit the job

27. Knowledge of industry standards help you _____ (M)

- A. **Work effectively**
- B. Get higher pay
- C. Decrease your work
- D. In impressing your supervisor

28. If there is any deviation in the company's norms, you have to frame a _____ (M)

- A. Spreadsheet
- B. Resignation letter
- C. Apology letter
- D. Report

29. In industry's regulatory procedure, you have to influence the team _____.(M)

- A. Negatively
- B. Positively
- C. Partly
- D. Psychologically

30. Which of the following options is the proper sequence of complying with industry, regulatory and organizational requirements? (L)

- A. Provide support- obtain clarification- follow policies- report deviation
- B. Report deviation- provide support- obtain clarification- follow policies
- C. Obtain clarification- follow policies- provide support- report deviation
- D. Follow policies- report deviation- provide support- obtain clarification

TSC - Sample Question Paper